



balmoral[®]
engineering

Product Catalogue

Revision 10

Distributed by



balmoralengineering.com.au

info@balmoralengineering.com.au

+61 2 9482 4000



Sections

1

ROTAMARKA
WARNING MARKERS

ALL RIGHTS RESERVED
PATENT
PENDING
ALL RIGHTS RESERVED



2

LINE GUARDS



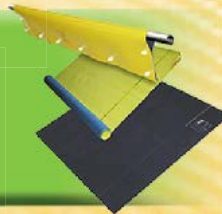
3

GLOVES & SLEEVES



4

MATS & COVERS



5

RESCUE KITS



6

TOOLS & EQUIPMENT



7

POLE MARKERS & CAPS



8

WILDLIFE PROTECTION





ROTAMARKA



WARNING MARKERS



- Marine grade components



- Reduced line loading by design



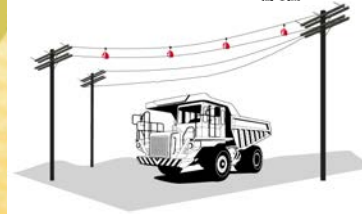
- Thermally tested



- UV Resistant



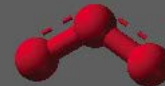
- Soft jaw protects cable and prevents creeping. Fits all lines from 2-50mm diameter



- Dielectric strength tested



- Snow and ice tested



- Ozone tested



- Wind tunnel tested

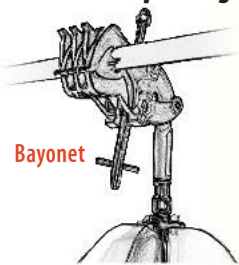


- Aerodynamic 3D design, rotates for high impact visibility from all angles of approach

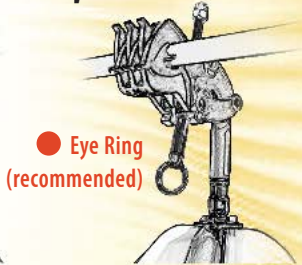


WARNING MARKERS

Choose Eye Ring or Bayonet

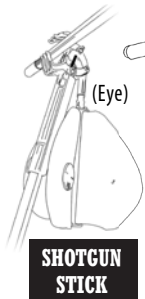


Bayonet

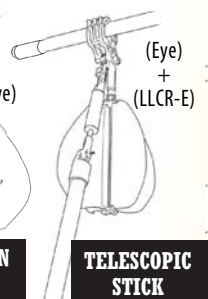


● Eye Ring
(recommended)

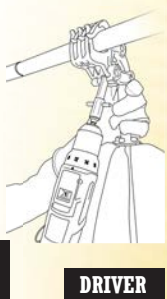
Installation Options



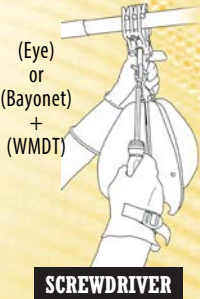
SHOTGUN
STICK



TELESCOPIC
STICK



DRIVER



SCREWDRIVER

(Eye)
+
(LLCR-E)

(Eye)
or
(Bayonet)
+
(WMDT)

This is a guide only, consult our Instructions For Use for further details.
Perform a risk assessment prior to undertaking any work.
Only to be used by industry certified personnel.
Must comply with all relevant work practice rules and industry guidelines.

***4Nm recommended tightening torque**

****Image representative only**

Warning Marker Drive Tool

WMDT | ~42 x 22mm SS (works with Eye or Bayonet)



Can be installed from Bucket Truck
with Shotgun Stick (Eye version)



Recommended Products

ROTAMARKA
Install/uninstall
tool - universal - Eye

LLCR-E | ~300 x 55

**

Can be installed from ground
with Telescopic Stick and
LLCR-E Tool (Eye version)





WARNING MARKERS

Warning Marker - Part Number Legend

Example :: WM-CS-B-1A-RW

A B C D E

- A - Product type:** WM (Warning Marker)
- B - Line attachment:** CS (Clam Shell)
- C - Hot Stick Attachment:** B/E (Bayonet or Eye Ring)
- D - Style of warning device:** 1A/1B/1C/1D/1E (Bushing/Flag/Bearing/Unit Jt/Mini)
- E - Colour:** RW/O/BY/BW (Red/White, Orange, Black/Yellow, Black/White)

Standard Size

WM-CS-B-1A-RW	WM-CS-B-1A-BW	WM-CS-B-1A-BY	Bayonet, Bushing
WM-CS-E-1A-RW	WM-CS-E-1A-BW	WM-CS-E-1A-BY	Eye Ring, Bushing
WM-CS-E-1C-RW	WM-CS-E-1C-BW	WM-CS-E-1C-BY	Eye Ring, Bearing

Mini Size

WM-CS-E-1E-RW	Eye Ring, Bearing
WM-CS-E-1E-BW	Eye Ring, Bearing
WM-CS-E-1E-BY	Eye Ring, Bearing

Bearing version recommended





WARNING MARKERS

Universal Joint | Eye Ring | Bearing

WM-CS-E-1D-RW

WM-CS-E-1D-BW

WM-CS-E-1D-BY



Vinyl Flag

WM-CS-B-1B-O | Bayonet
WM-CS-E-1B-O | Eye-Ring



**Ideal for
installation on
guy or stay wires**

**See also
Guy Guards**
Refer Section 2 - Page 5



**See also
Pole Markers**
Refer Section 7 - Page 1





LINE GUARDS

- Unique striped safety feature



- Stamped & rated to comply with Australian and International Standards

- Robust design and construction backed by decades of engineering to ensure the highest quality & safety standards

- Eyelet in bell housing allows locking by cable ties & complies with WHS requirements



- Weather resistant



- LV & HV options available

- Rigid guards or flexible style hose cater for most requirements

- Suitable for use on Power Lines & Wires as visual warning, mechanical protection and electrical insulation

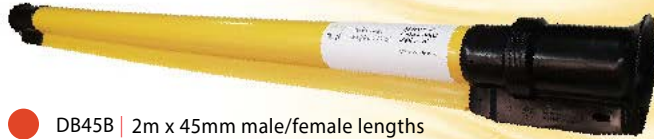




LINE GUARDS

Recommended Products

Lion Tails



DB45B | 2m x 45mm male/female lengths
PE, Yellow outer, Black inner safety feature
ASTM F 712, Class 2 15KV*



DB35B | 2m x 35mm male/female lengths
PE, Orange outer, Black inner safety feature
ASTM F 712, Class 3 26KV*



**Class 2
15KV**

**Class 3
26KV
(coming soon!)**

***Both phases covered**



LINE GUARDS

Tiger Tails® Class I - 650V AS4202 - HDPE



DB35A | 2.5m x 35mm



DB35ARB | 2.5m x 35mm



DB35ARB125 | 1.25m x 35mm



DB45A | 2.5m x 45mm



LS70 | 2m x 70mm

Recommended Products



650V



LINE GUARDS

Panther Tails



Unique 2 tone design

TPP15-Kit
Installation
tool kit for
TPP15 Rolls



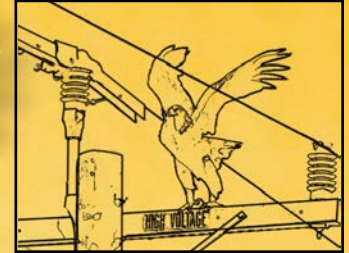
- TPP15 | 60m x 15mm roll | EVA Black outer, Yellow inner safety feature | Electrically tested to ASTM F 712 Class 2 15KV*
- 1. TPP20 | 3m x 20mm male / female lengths | HDPE, Black Outer, Yellow inner safety feature | ASTM F 712 Class 2 15KV*
- 2. TPP35 | 3m x 35mm male / female lengths | HDPE, Black Outer, Yellow inner safety feature | ASTM F 712 Class 2 15KV*



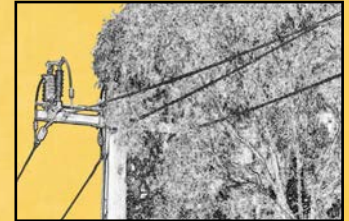
Class 2
15KV

*Both phases covered

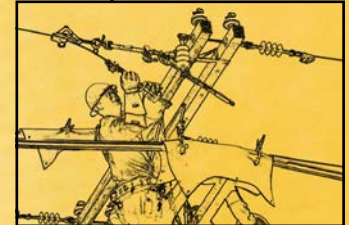
Wildlife protection



Tree protection



Personal protection





LINE GUARDS

Guy Guards

GG | 2m x 45mm | HDPE

For Stay & Guy Wires
(not rated for electrical insulation)



Jumper Wire Guards

IPEP | 10m x 35mm | EVA | AS4202 Class 1 | 650V



Flexible hose for covering Bonds,
Bridges & Jumper Wires





GLOVES & SLEEVES



LV HV Testing Services Available

- Pure Latex Gloves manufactured under
ISO 9001
ISO 14001



- Certified to EN/IEC 60903 also available in ASTM D120
- Ergonomically shaped excellent strength & durability
- Supreme feel & flexibility
- Outer Protector Gloves custom designed to perfectly complement the Marigold Rubber Insulating Glove

- Manufactured without the use of solvents & hazardous chemicals utilising a proprietary aqueous dipping process



- Acid resistant
- Ozone resistant
- Low temperature resistant
- Comprehensive range of classes, colours, lengths and sizes, including half sizes
- Various cuff styles available including straight, contour and bell
- Arc flash certified





LV HV Testing Services Available

GLOVES & SLEEVES

Use the Chart below to determine the appropriate level of protection for your application

Labeling Chart			
Marigold [®] Natural Rubber Electrical Protection Equipment			
Class Colour	Proof Test Voltage AC/DC	Max. Use Voltage AC/DC	Insulating Rubber Glove Label
00 Beige	2,500 / 10,000	500 / 750	MARIGOLD INDUSTRIAL ANSI / ASTM D120 EN60903 TYPE 1 10 CLASS 00
0 Red	5,000 / 20,000	1,000 / 1,500	MARIGOLD INDUSTRIAL ANSI / ASTM D120 EN60903 TYPE 1 10 CLASS 0
1 White	10,000 / 40,000	7,500 / 11,250	MARIGOLD INDUSTRIAL ANSI / ASTM D120 EN60903 TYPE 1 10 CLASS 1
2 Yellow	20,000 / 50,000	17,000 / 25,500	MARIGOLD INDUSTRIAL ANSI / ASTM D120 EN60903 TYPE 1 10 CLASS 2
3 Green	30,000 / 60,000	26,500 / 39,750	MARIGOLD INDUSTRIAL ANSI / ASTM D120 EN60903 TYPE 1 10 CLASS 3
4 Orange	40,000 / 70,000	36,000 / 54,000	MARIGOLD INDUSTRIAL ANSI / ASTM D120 EN60903 TYPE 1 10 CLASS 4

Outer Protector Gloves should always be worn over Rubber Insulating Gloves to prevent mechanical damage to the rubber gloves. The Outer Protector must be properly sized and shaped to avoid the deformation or damage of the Rubber Insulating Glove. The minimum distance between the cuff of the Rubber Insulating Glove and the cuff of the Outer Protector Glove is listed in the table below "Clearance for Outer Protectors".

Clearance Table for Outer Protectors

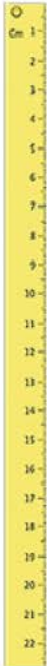
Glove Class	Min. Distance Between Outer Protectors & Rubber Insulating Gloves	
	inches	mm
00, 0	½	13
1	1	25
2	2	51
3	3	76
4	4	102





LV HV Testing Services Available

GLOVES & SLEEVES



Glove Length
280 mm (11 inch)
360 mm (14 inch)
400 mm (16 inch)
460 mm (18 inch)

Glove Size	Nominal Hand Circumference	
7	7 inches	
8	8 inches	203 mm
8½	8½ inches	216 mm
9	9 inches	229 mm
9½	9½ inches	241 mm
10	10 inches	254 mm
10½	10½ inches	267 mm
11	11 inches	279 mm

Tolerance = +/- 13 mm

* Allow an extra half inch if cotton inners are to be used



Rubber Insulating Glove Item Number Legend



Example :: RIG-4-18-YB-C-10H

A B C D E F

A - Glove type: RIG (Rubber Insulating Glove)

B - Class: 00/0/1/2/3/4

C - Length: 11/14/16/18 (inches)

D - Colour: R/Y/YB/BY (Red, Yellow, Yellow under Black, Black under Yellow)

E - Cuff: S/C/B (Straight/Contour/Bell)

F - Size: 7/8/8H/9/9H/10/10H/11 (H = ½ sizes)

How to measure

Measure around your hand above the V of the thumb. This gives you the circumference in inches.



LV HV Testing Services Available

GLOVES & SLEEVES

Rubber Insulating Sleeve Item Number Legend

Example :: RIS-4-RY-EC-Regular

A B C D E



A - Sleeve type: RIS (Rubber Insulating Sleeve)

B - Class: 2/3/4

C - Colour: RY (Red under Yellow)

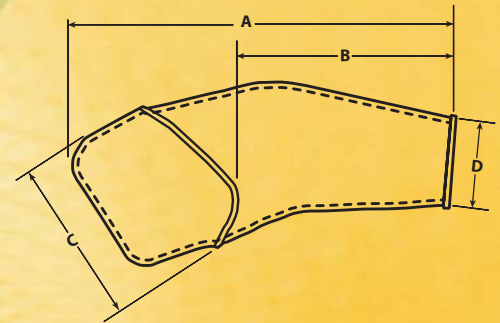
D - Arm: EC/S (Extra Curve/Straight)

E - Size: S/R/L/EL (Small/Regular/Large/Extra Large)



Extra Curved Arm Sleeve

A in. (mm)	B in. (mm)	C in. (mm)	D in. (mm)
Small 24.25 (616)	15.13 (384)	12.5 (317)	5.75 (146)
Regular 26.5 (673)	15.5 (394)	12.25 (311)	5.25 (140)
Large 27.75 (705)	16 (406)	12.87 (328)	6.87 (175)
Extra Large 29.5 (749)	17.5 (445)	12.87 (327)	7 (178)





GLOVES & SLEEVES

LV HV Testing Services Available

AVAILABLE
ON REQUEST

Class 2 - Dielectric Boots

- RIB2Y6 | Size 6*
- RIB2Y7 | Size 7*
- RIB2Y8 | Size 8*
- RIB2Y9 | Size 9*
- RIB2Y10 | Size 10*
- RIB2Y11 | Size 11*
- RIB2Y12 | Size 12*
- RIB2Y13 | Size 13*
- RIB2Y14 | Size 14*



Class 00 - 500V Straight Cuff 11 inch

- RIG0011RS7 | Size 7
- RIG0011RS8 | Size 8
- RIG0011RS8H | Size 8½
- RIG0011RS9 | Size 9
- RIG0011RS9H | Size 9½
- RIG0011RS10 | Size 10
- RIG0011RS10H | Size 10½
- RIG0011RS11 | Size 11



Class 00 - 500V Straight Cuff 14 inch

- RIG0014YS7 | Size 7*
- RIG0014YS8 | Size 8*
- RIG0014YS9 | Size 9*
- RIG0014YS10 | Size 10*
- RIG0014Y11 | Size 11*



Class 0 - 1000V Straight Cuff 14 inch

- RIG014YS7 | Size 7
- RIG014YS8 | Size 8
- RIG014YS8H | Size 8½
- RIG014YS9 | Size 9
- RIG014YS9H | Size 9½
- RIG014YS10 | Size 10
- RIG014YS10H | Size 10½
- RIG014YS11 | Size 11



Class 0 - 1000V Straight Cuff 11 inch

- RIG011YS8 | Size 8*
- RIG011YS8H | Size 8½**
- RIG011YS9 | Size 9*
- RIG011YS9H | Size 9½**
- RIG011YS10 | Size 10*
- RIG011YS10H | Size 10½**
- RIG011-YS11 | Size 11*



Class I - 5KV Straight Cuff 14 inch

- RIG114YBS8 | Size 8*
- RIG114YBS8H | Size 8½*
- RIG114YBS9 | Size 9
- RIG114YBS9H | Size 9½
- RIG114YBS10 | Size 10
- RIG114YBS10H | Size 10½
- RIG114YBS11 | Size 11*



*Special Order **to be confirmed



LV HV Testing Services Available

GLOVES & SLEEVES



Class 2 - 17KV Bell Cuff 16 inch

- RIG216YBB8 | Size 8*
- RIG216YBB8H | Size 8½*
- RIG216YBB9 | Size 9
- RIG216YBB9H | Size 9½
- RIG216YBB10 | Size 10
- RIG216YBB10H | Size 10½
- RIG216YBB11 | Size 11*



Class 2 - 17KV Straight Cuff 16 inch

- RIG216YBS8 | Size 8
- RIG216YBS8H | Size 8½
- RIG216YBS9 | Size 9
- RIG216YBS9H | Size 9½
- RIG216YBS10 | Size 10
- RIG216YBS10H | Size 10½
- RIG216YBS11 | Size 11



Class 2 - 17KV Contour Cuff 18 inch

- RIG218YBC8 | Size 8*
- RIG218YBC8H | Size 8½*
- RIG218YBC9 | Size 9
- RIG218YBC9H | Size 9½
- RIG218YBC10 | Size 10
- RIG218YBC10H | Size 10½
- RIG218YBC11 | Size 11*



Class 3 - 26.5KV Bell Cuff 16 inch

- RIG316YBB8 | Size 8*
- RIG316YBB8H | Size 8½*
- RIG316YBB9 | Size 9
- RIG316YBB9H | Size 9½
- RIG316YBB10 | Size 10
- RIG316YBB10H | Size 10½
- RIG316YBB11 | Size 11*



Class 3 - 26.5KV Straight Cuff 16 inch

- RIG316YBS8 | Size 8
- RIG316YBS8H | Size 8½
- RIG316YBS9 | Size 9
- RIG316YBS9H | Size 9½
- RIG316YBS10 | Size 10
- RIG316YBS10H | Size 10½
- RIG316YBS11 | Size 11



Class 3 - 26.5KV Contour Cuff 18 inch

- RIG318YBC8 | Size 8*
- RIG318YBC8H | Size 8½*
- RIG318YBC9 | Size 9
- RIG318YBC9H | Size 9½
- RIG318YBC10 | Size 10
- RIG318YBC10H | Size 10½
- RIG318YBC11 | Size 11*

*Special Order



LV HV Testing Services Available

GLOVES & SLEEVES



Class 4 - 36KV Bell Cuff 18 inch

- RIG418YBB9 | Size 9
- RIG418YBB9H | Size 9½
- RIG418YBB10 | Size 10
- RIG418YBB10H | Size 10½
- RIG418YBB11 | Size 11*



Class 4 - 36KV Straight Cuff 18 inch

- RIG418YBS9 | Size 9
- RIG418YBS9H | Size 9½
- RIG418YBS10 | Size 10
- RIG418YBS10H | Size 10½
- RIG418YBS11 | Size 11



Class 4 - 36KV Contour Cuff 18 inch

- RIG418YBC9 | Size 9
- RIG418YBC9H | Size 9½
- RIG418YBC10 | Size 10
- RIG418YBC10H | Size 10½
- RIG418YBC11 | Size 11*



Class 2 - 17KV Extra Curved

- RIS2RYECS | Small
- RIS2RYECR | Regular
- RIS2RYECL | Large



Class 3 - 26.5KV Extra Curved

- RIS3RYECS | Small
- RIS3RYECR | Regular
- RIS3RYECL | Large



Class 4 - 36KV Extra Curved

- RIS4RYECS | Small
- RIS4RYECR | Regular
- RIS4RYECL | Large



Also available in selected sizes



LV HV Testing Services Available

GLOVES & SLEEVES

Arc Flash Safety Design



Velcro tab to secure strap

LV Outer Protector 10 inch - Goatskin Velcro Cotton Strap Kevlar Thread

- OUTLVGS7 | Size 7
- OUTLVGS8 | Size 8-8½
- OUTLVGS9 | Size 9-9½
- OUTLVGS10 | Size 10-10½
- OUTLVGS11 | Size 11

Note: Choose same size as Marigold Class 00 and 0 gloves or best fit for comfort



HV Outer Protector 12 inch - Goatskin

- OUTHVGS8 | Size 8-8½
- OUTHVGS9 | Size 9-9½
- OUTHVGS10 | Size 10-10½
- OUTHVGS11 | Size 11

Note: Choose same size as Marigold Class 1, 2, 3 & 4 gloves or best fit for comfort

Arc Flash Rated



Powerflex, Neo Coat LVL4 Flame, LVL5 Cut EN

- PFLEX-8 | Size 8
- PFLEX-9 | Size 9
- PFLEX-10 | Size 10
- PFLEX-11 | Size 11

Note: Choose one size up if using over Marigold Class 00 and 0 Gloves or best fit for comfort

Inner Liners One Size Fits All

- COT1 | Cotton - Interlock | 10"
- COT2 | PolyCotton - Knitted | 10"
- COT3 | Cotton - Interlock | 14"



Glove Talc

GLO-TALC | 100g



Glove Air Test Tool

- GLO-ROL1 | 360 x 40 | HV
- GLO-ROL2 | 300 x 25 | LV



Sleeve Accessories

- B2 | Sleeve Buttons (1pc)
- B22 | Sleeve Buttons (2pc - 4 pack)
- H1 | Harness C/W 4 B2 Buttons
- S1 | Straps (2) C/W 4 B2 Buttons

H1



S1



B2



B22





LV HV Testing Services Available

GLOVES & SLEEVES

LV Glove Bag
2 Pocket Treated Canvas
Velcro Close - Webbing Loops

26012 | 390x210x45

Solid Walls



Hard Base Breathable

LV Glove Bag
1 Pocket Loomstate Canvas
Velcro Close - Webbing Loop

26023 | 400x220x75



LV Glove Bag
2 Pocket Loomstate Canvas
Velcro Close - Webbing Loop

26016 | 400x220x75



Slimline front pocket suitable for leather storage

LV Glove Bag
3 Pocket Loomstate Canvas
Velcro Close - Webbing Loop

26017 | 400x220x150



Slimline front pocket suitable for leather storage

LV Glove Bag
3 Pocket Treated Canvas
Velcro Close - Plastic Snap Hook

26025 | 380x220x80



Slimline front pocket suitable for leather storage

Quick Dry Mesh

HV Glove Bag
2 Pocket Loomstate Canvas
Velcro Close - Metal Snap Hook

26042 | 500x220x150



HV Glove & Sleeve Bag
3 Pocket Loomstate Canvas
Velcro Close - Metal Snap Hook

26035 | 700x200x250



Slimline front pocket suitable for leather storage



MATS & COVERS



LV HV Testing Services Available

- EPDM Rubber or PVC material options

- Dual colour material safety options available

- Non-slip & flexible Ground Mats

- Weather resistant



Recycling of off-cuts
into firehose when possible

- Crease in Class I PVC style covers to conform to line



Velcro



Stud



Magnetic

- Stamped & rated to comply with Australian and International Standards

- Meets ENA & electrical safety rules and guidelines in most States and Territories



LV HV Testing Services Available

Recommended Products

MATS & COVERS

Ground Mats EPDM

- | | |
|--|--|
| 1. 181A-1 1mx1mx6mm Class A 650V Cut-out | 3. 181A-3 1.5mx1mx6mm Class A 650V Slots |
| 181A-2 1.2mx1mx6mm Class A 650V Plain | 181A-4 900x900x6mm Class A 650V Plain |
| | 5. 1813-1 600x600x6mm Class 3 26.5KV Plain |



1.



3.

Custom cut-outs
available MOQ's apply

Equipotential Mats

- 181EP-1 | 770x770mm | C/W Bag



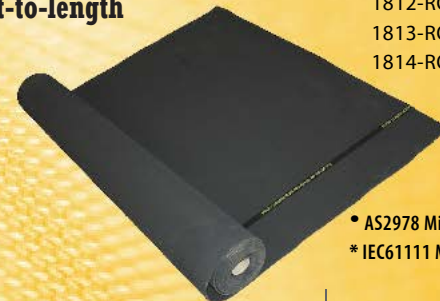
Ground Mats 1mx1mx6mm EPDM



- 181A* | Class A | 650V
- 1810* | Class 0 | 1000V
- 1811* | Class 1 | 5KV
- 1812* | Class 2 | 17KV
- 1813* | Class 3 | 26.5KV
- 1814* | Class 4 | 36KV

- AS2978
- * IEC61111

Ground Mats 10mx1mx6mm EPDM Cut-to-length



- 181A-ROLL* | Class A | 650V
- 1810-ROLL* | Class 0 | 1000V
- 1811-ROLL* | Class 1 | 5KV
- 1812-ROLL* | Class 2 | 17KV
- 1813-ROLL* | Class 3 | 26.5KV
- 1814-ROLL* | Class 4 | 36KV

- AS2978 Minimum 900mm cut size
- * IEC61111 Minimum 600mm cut size



LV HV Testing Services Available



Recommended Products

MATS & COVERS

Line Covers

**650V PVC Magnet/Press Studs
AS4202**

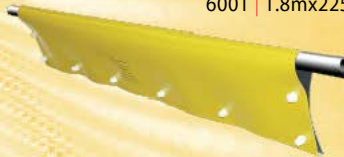
- 2003 | 1.2mx225mm drop
- 3003 | 1.2mx300mm drop
- 4004 | 1.2mx375mm drop
- 5002 | 1.5mx225mm drop



Line Covers

**650V PVC Studs
AS4202**

- 2001 | 1.2mx225mm drop
- 3001 | 1.2mx300mm drop
- 4001 | 1.2mx375mm drop
- 5001 | 1.5mx225mm drop
- 6001 | 1.8mx225mm drop



Line Covers

**650V EPDM Velcro
AS4202**

- 2004 | 1.2mx225mm drop
- 2006 | 600x225mm drop
- 2010 | 1mx235mm drop
- 3002 | 1.2mx300mm drop



Cross Arm Covers

**650V
AS4202**

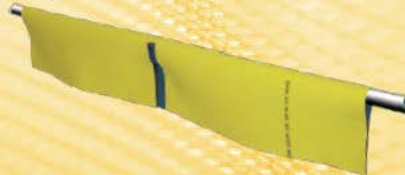
- 7001 | 1.2mx375mm drop | PVC Studs
- 7004 | 1.2mx225mm drop | EPDM Velcro
- 7008 | 1.2mx225mm drop | PVC Mag/PStuds
- 7010 | 1mx235mm drop | EPDM Velcro



Comms Cable Covers

**650V
AS4202**

- 7002 | 1.2mx225mm | EPDM Velcro
- 8002 | 600x225mm | PVC Studs
- 8006 | 600x225mm | PVC Mag/PStud



Fuse Link Covers

**650V
AS4202**

- 8001 | 600x375mm drop | PVC Studs
- 8007 | 850x850mm | PVC Plain
- 8010 | 850x700mm | EPDM Velcro
- 8016 | 400x400mm drop | PVC Studs
- 8020 | 600x375mm drop | PVC Mag





LV HV Testing Services Available



Recommended Products

MATS & COVERS

Substation & Switchboard Kits



Clear or Yellow Drapes Available

Available Fasteners:
(Magnetic, Eyelet, Clamps)

- 16002 | (9008) (9007) (9019) (181A) (25006) (26031) (YS-211-3-5)
2 x small plain Drapes, 2 x medium plain Drapes, 1 x large plain Drape,
1 x Ground Mat, 1 x Velcro Strap, 1 x Bag, 4 x Clamps
- 16003 | (10005) (10006) (181A) (25006) (26031)
4 x small magnetic Drapes, 2 x large magnetic Drapes, 1 x Ground Mat,
1 x Velcro Strap, 1 x Bag
- 16004 | (10005) (10021) (26031) (YS-211-3-5)
4 x small magnetic Drapes, 2 x large magnetic Drapes, 1 x Bag, 4 x Clamps
- 16005 | (10005) (10006) (26031)
4 x small magnetic Drapes, 2 x large magnetic Drapes, 1 x Bag
- 16006 | (10029) (10030) (181A) (25006) (26031)
4 x small magnetic Drapes, 2 x large magnetic Drapes, 1 x Ground Mat,
1 x Velcro Strap, 1 x Bag
- 16007 | (10031) (10032) (26031) (YS-211-3-5)
2 x small clear magnetic Drapes, 2 x large clear magnetic Drapes,
4 x Clamps, 1 x Bag

Custom kits available upon application, MOQ's apply

Street Light Column Kits



- 14001 | (23002) (INS-S) (INS-L) (26004)
1 x magnetic Column Cover (pair), 2 x small Inserts, 2 x large Inserts, 1 x Bag
- 14002 | (23002) (INS-S) (INS-L) (181A) (25006) (26031)
1 x magnetic Column Cover (pair), 2 x small Inserts, 2 x large inserts,
1 x Ground Mat, 1 x Velcro Strap, 1 x Bag
- 14003 | (23002) (INS-S) (26004)
1 x magnetic Column Cover (pair), 2 x small Inserts, 1 x Bag

Custom kits available upon application, MOQ's apply





LV HV Testing Services Available

Recommended Products

MATS & COVERS

**Substation & Switchboard Drapes
EPDM 650V**



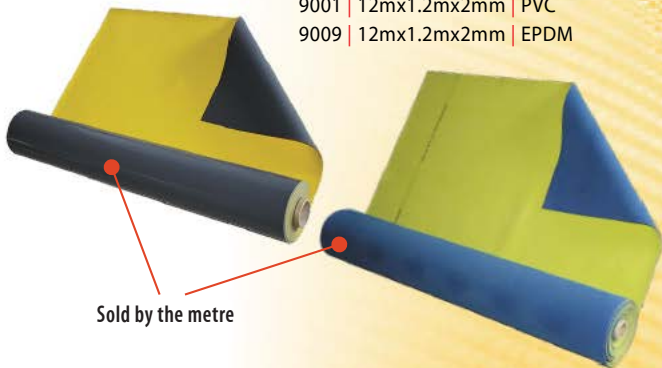
- 9016 | 1m x 100mm | plain
- 9017 | 600 x 300mm | plain
- 9018 | 300 x 300mm | plain
- 10007 | 300 x 225mm | eyelets
- 10008 | 450 x 300mm | eyelets
- 10009 | 600 x 450mm | eyelets
- 10010 | 900 x 600mm | eyelets
- 10011 | 1.8m x 900mm | eyelets

**Substation & Switchboard Drapes
PVC 650V**



- 8008 | 850 x 850mm | magnetic
- 9007 | 600 x 450mm | plain
- 9008 | 400 x 300mm | plain
- 9019 | 1.2m x 900mm | plain
- 10005 | 600 x 450mm | eyelets/mag
- 10006 | 1.2m x 600mm | eyelets/mag
- 10020 | 900 x 900mm | eyelets
- 10021 | 2m x 600mm | magnetic

**Substation & Switchboard Drapes
650V Cut-to-length**



- 9001 | 12m x 1.2m x 2mm | PVC
- 9009 | 12m x 1.2m x 2mm | EPDM

Sold by the metre

**Cable End Covers
PVC 650V**



- 19001 | 180 x 110mm
- 19002 | 245 x 190mm
- 19003 | 230 x 110mm





MATS & COVERS

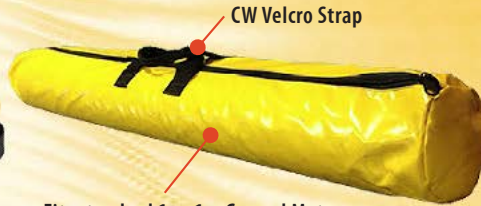
Bags

PVC - Zipper

- 1. | 26014 | Line Cover Bag | 1.4mx400x100mm
- 2. | 26015 | Ground Mat Bag | 1.1mx150x100mm



Fits up to 5x1.2m long Line Covers



Fits standard 1mx1m Ground Mat

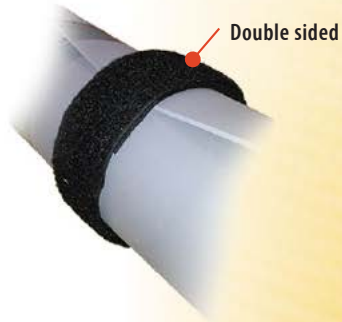
Clamp Polypropylene

YS-211-3-5 | 220x115x22mm



Straps Velcro

- 25005 | 500x50mm
- 25006 | 1mx50mm



Double sided

Studs

1.



- 1. | 24003 | Magnet
- 2. | PB4 | Standard Stud
- 3. | PB5-A | Male Press Stud
- 4. | PB5-B | Female Press Stud

2.



3.



4.





RESCUE KITS

- Pole Top Kits and components

- Low Voltage Switchboard Rescue Kits and components

- Latest comfort style Linesman Safety Harnesses/Belts, leading brands

- Customised kits and accessories to meet local and national industry standards



- Quality manufacturers and brands

- Easy adjusting Pole Straps

- Friction descenders and lowering devices

- Rescue Bags & Boxes
Pouches
Knives
Gloves
Cutters
Crooks



RESCUE KITS

Pole Top Rescue Kit (NSW - ASP - C/W Bag)

11006 | 1x Bag, 1x CPR card, 1x Anchor Strap
1x Body Belt & Pole Strap, 1x Knife,
1x Rope, 1x Rubber Gloves



Pole Top Rescue Kit (NSW - ASP - C/W Box)

11019 | 1x Box, 1x CPR card, 1x Body Belt & Pole Strap,
1x Knife, 1x Rope, 1x Rubber Gloves, 1x Anchor Strap



Pole Top Rescue Kit (NSW - CSP)

11020 | 1x Bag, 1x CPR card, 1x Twin Pole Strap, 1x Knife,
1x Rope, 1x Rubber Gloves, 1x Anchor Strap



Pole Top Rescue Kit (QLD)

11007 | 1x Bag, 1x CPR card, 1x Body Belt, 1x Knife,
1x Parrot Beak Cutters, 1x Pole strap,
1x Rope, 1x Tool Pouch, 1x Rubber Gloves



Pole Top Rescue Kit (VIC & TAS)

11003 | 1x Bag, 1x CPR card, 1x Anchor Strap, 1x Body Belt and
Pole Strap, 1x Pliers, 1x Rope, 1x Parrot Beak Cutters,
1x Riggers Gloves, 1x Webbing Cutter

Optional item: Rubber Gloves RIG014YS11



Pole Top Rescue Kit (WA)

11009 | 1x Bag, 1x CPR card,
1x Safety Knife,
1x Parrot Beak Cutter,
1x Pole Strap, 1x Rope,
1x Snap Hook, 1x Crook

Optional item:

Half Harness (BB-HAR)





RESCUE KITS

- **LV Switchboard Rescue Kit** 11002 | 1x Bag, 1x CPR Card, 1x Crook, 1x Torch, 1x Isolate Here Sign, 1x Trauma Dressing, 1x Fire Blanket, 1x Rubber Gloves



PPE Equipment Bags

- 26036 | 780 x 286 x 360 Canvas (heavy duty)
- 26040 | 550 x 300 x 300 Canvas (medium duty)



Rope Bags

- 26034 | 640 x 280 PVC



Rescue Descender Devices

- ANC-ST-2 | 1.8m



LV Crooks

- GAN-CRK | 370 x 25 HDPE



TOOLS & EQUIPMENT

- Premium Leather Tool Pouches

- RipStop Canvas Tool Buckets

- Bags constructed using heavy duty fasteners & fittings



Rubber Goods Cleaner

- Excellent cleaning power

- Harmless on rubber

- Non corrosive & non toxic

- Multiple packaging options
- No mixing required



TOOLS & EQUIPMENT

Test Meter Bags

- 26038 | 360x280x240 PVC Velcro
- 26010 | 300x90x150 PVC Velcro
- 26026 | 200x120x240 PVC Velcro



Tool Bags

- 26018 | 350x150x250 | 15 Internal Pockets
- 26022 | 380x290 | 2 External Pockets
- 26028 | 9 Pocket | Webbing Belt



Rubber Goods Cleaner

- RBG-D72 | 72 wipes
- RBG-35LR | 1 Quart Spray

Approved for use on
Mats & Covers, Gloves & Sleeves





POLE MARKERS & CAPS



Pole Markers

***Special Order Only**

- Designed to last 15 years +
- Excellent UV resistance
- Increases visibility of poles for both day and night conditions
- Textured surface to reduce adhesion of unwanted signs and labels
- Easy to install, Tek Screws or Band-It Strapping can be used.

Item No.	Size	Base Material	Base Colour	Reflector Quantity	Reflector Colour
PM6060GW	600x600mm	Polyethylene	Grey	6	White
PM6060GY	600x600mm	Polyethylene	Grey	6	Yellow
PM7060BY	700x600mm	Polyethylene	Black	8	Yellow
PM6030GW	600x300mm	Polyethylene	Grey	6	White
PM5030BY	500x300mm	Polyethylene	Black	6	Yellow



Excellent Low Light Visibility

Custom sizes available on request subject to MOQ





POLE MARKERS & CAPS



Pole Caps

- Designed to last 30 years +
- Excellent UV resistance
- Natural insulating properties
- Flexible/pliable material can bend and stretch to uneven pole sizes and shapes
- A range of sizes and shapes available
- Easy to install, Tek screws can be used

Item No.	Size	Base Material	Base Colour	Comments
PC130B	130x45mm	LDPE	Black	
PC150G	150x45mm	LDPE	Grey	
PC200B	200x100mm	LDPE	Black	
PC200G	200x100mm	LDPE	Grey	Comes with Bird Diverter
PC216Y	216x170mm	LDPE	Yellow	Comes with Velcro strap and is rated electrically

Custom sizes available subject to MOQ

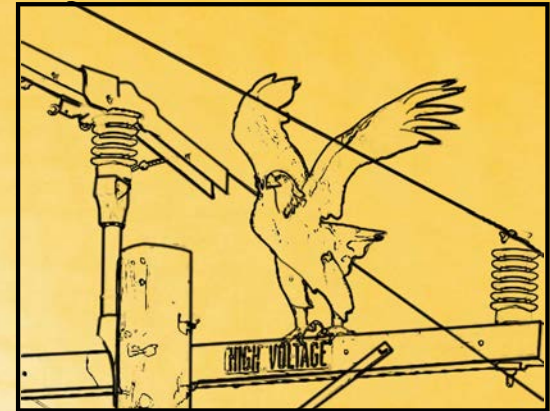




WILDLIFE PROTECTION

- Designed to cover over Crossarm mounted Insulators to help protect Birds and Critters from bridging between phases.
- Each unit should be installed on each Insulator/Phase on the Crossarm.
- Electrical faults induced by Birds and Critters can be deadly to the animals and potentially cause expensive outages.
- Two types, offset and centre depending on Insulator configuration.
- Excellent weathering resistance, time tested product.
- Easily snap clips together to form a sturdy installation

Wildlife protection



WPC-01

Wildlife Protection Cover,
450x133, Black, Offset



WPC-C1

Wildlife Protection Cover,
450x130, Black, Centre



**Electrically Tested
to 25KV
Class 3**

**Can be used with
Panther Tails to
extend barrier**



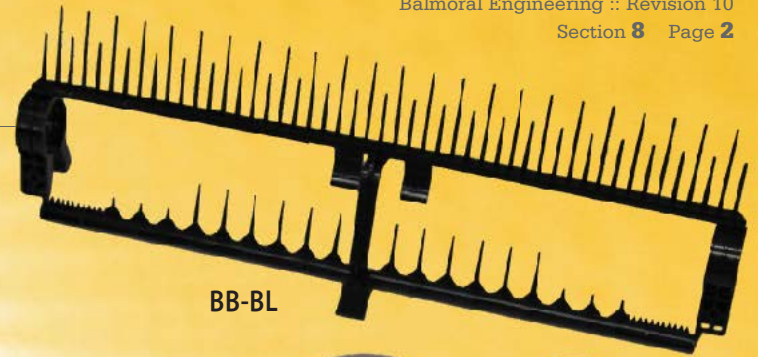
WILDLIFE PROTECTION

Bird Blocker

- Designed to be installed on Power Lines anywhere along the span or near the cross arm to prevent birds from landing or settling on the lines.
- Suits most cable sizes.
- Will keep vertical orientation and face upwards.
- UV stabilised with good electrical insulation properties.
- Rubber stoppers used on either side of the Bird Blocker to fix in place on the line.
- Can install multiple Bird Blockers “in series” along the line. Where this is done, use rubber stoppers for every 10 Bird Blockers installed.

Item No.	Size	Base Material	Base Colour	Suits Cable Size
BB-BL	500x153mm	HDPE	Black	5mmØ–240mm ²
RS-BL	35x26mm	EPDM	Black	5mmØ–240mm ²

Parameter	Results (BB-B)
Withstand voltage	15KV for 1 minute
Heat resistance	No cracking or other damage at 60 degrees C
Cold resistance	No cracking or other damage at 20 degrees C
Crushing test	30N for 1 minute



BB-BL



RS-BL



**For
Bird Diverters**
Refer to Section 1 - Page 3



balmoral[®]
engineering

Distributed by



78 Cryers Road, East Tamaki, Auckland, 2013

p: +64 9 274 3340

f: +64 9 274 5490

e: sales@transnet.co.nz

w: www.transnet.co.nz